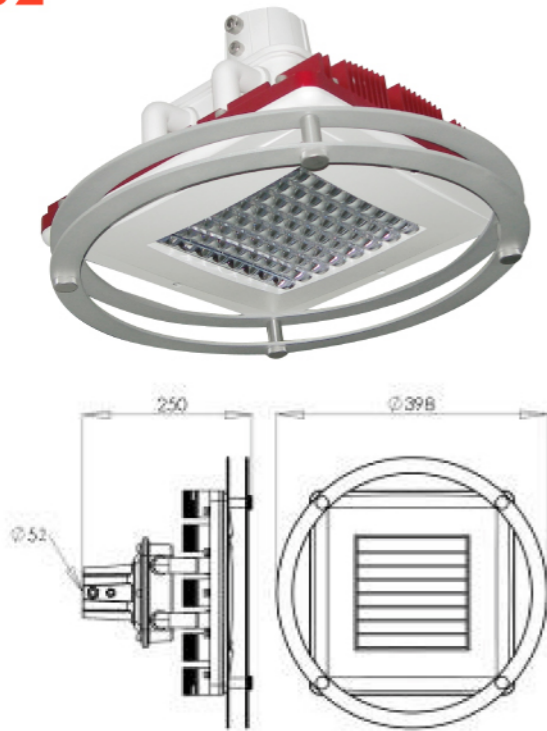


LED sidewalk light

S2



unit : mm



Seongnam-si, Seoul, Korea.

Specification

Main Voltage/Frequency	200~240 V(AC)/50~60(HZ)
LED Power Consumption	70 W±10%
LED Luminous Flux	>5,000
LED Efficiency	>80lm/W
Color Temperature	3500/5100±10%
Color Rendering Index	>70
Operating Temperature	-20°C~+50°C
Operating Relative Humidity	20%~80%
Lifespan (L70 life)*	50,000hours
Dimensions	Φ 398, H250
Weight	8.9kg
IP (Ingress Protection)	65
Certification	CE, UL, RoHS compliance
Dimming solution (Intelligent system)	N/A

*Maintains at least 70% of initial lumen output

Applications

Normal street, public area.

Description

S2 LED Sidewalk light is designed with all new concepts with high flexibility and quality. Different color of decorative ring can be designed by customers' request.

Features

- Top quality LED source from Nichia
- Special design with high flexibility and quality
- Longer lifetime (>50,000 hours)
- Excellent integration of heat sink, reflector, electric board and lens

Payback comparison

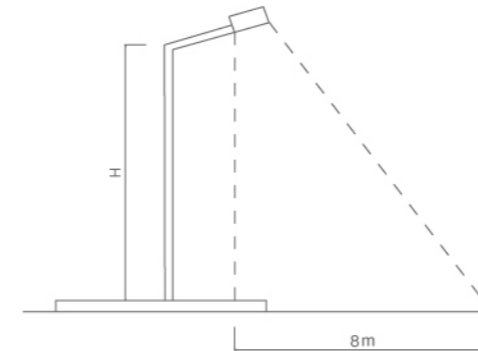
FACTORS	Street light		150w HPS
	150w Mercury	fiti S2 LED street light	
Lamp power consumption (watt)	150	70	150
System power consumption (watt)	170	82	176
Lifespan (Hours)	5,000	50,000	10,000
Color Rendering Index	40	>70	25
Comparison of energy consumption			
Base on 100 pcs quantity			
System power consumption (watt)	17000	8200	17600
Electricity consumption per day (kw-hr)*	204	98	211
Annual consumption (kw-hr)	74,460	35,916	77,088
Operation extra spending (5 years)			
Base on EU area			
Cost of energy consumption**	\$67,014	\$32,324	\$69,379
Cost of lamp replacement	\$3,000	N/A	\$7,500
Cost of maintenance (Labor)***	\$7,500	N/A	\$4,500
Cost of ballast replacement (1 time)	\$4,000	N/A	\$4,000
Total Spending	\$81,514	\$32,324	\$85,379

Average each product saves \$500 after 5 years operation!!

*For 12 hours operation **Annual consumption x 5years x \$ 0.18 USD (Base on European electricity rate) ***\$15 USD x 100 pcs x 5 times

Co2 emission			
Co2 emission per year (kg)	50,633	24,423	52,420

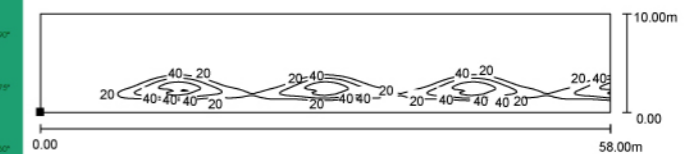
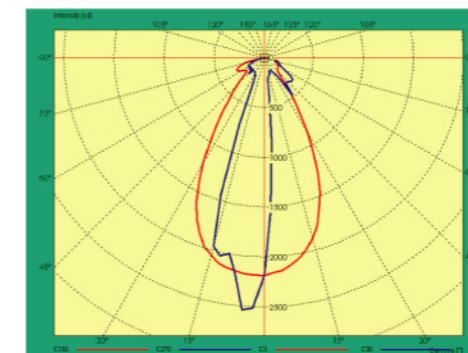
Application data



S2	Average Illumination		
	5m height	6m height	7m height
Spacing: 15m	10	10	10
Spacing: 18m	8	8	8
Spacing: 22m	7	7	7

*This data differs from variety of factors such as length of overhead, angle...etc.

Photometrics data



* This simulation is based on 58 m road, which installs 3 pcs S2 LED street light.

**The condition is 5 meters height and 15 meters distance between lights.

Headquarters(Taiwan)

TEL : +886 37 580088 EXT.2337 FAX : +886 37 582690
 ADD: No.16 KeJhong Rd., Science-Based Industrial Park, Jhunan Township, Miaoli County 350,Taiwan, R.O.C.
 Mail to : lighting-sales@foxsemicon.com



LED sidewalk light

